

# Solid Foundations

## Elements of a Healthy Church

# What to Look for in a Home Church

- One of the most important purchases in life is a house
- The same applies to those looking for a home church
- According to the Bible, there are certain biblical elements that characterize a healthy church

# Foundation of the Church

- “Therefore everyone who hears these words of mine and puts them into practice is like a wise man who built his house on the rock. <sup>25</sup> The rain came down, the streams rose, and the winds blew and beat against that house; yet it did not fall, because it had its **foundation** on the rock. <sup>26</sup> But everyone who hears these words of mine and does not put them into practice is like a foolish man who built his house on sand. <sup>27</sup> The rain came down, the streams rose, and the winds blew and beat against that house, and it fell with a great crash” (Matt 7:24-27)

# Foundation of the Church

- The foundation of the church includes:
  - a high view of Scripture,
  - emphasis on sound teaching,
  - equipping of the saints (discipleship), and
  - biblical practices
- “All Scripture is God-breathed and is useful for teaching, rebuking, correcting and training in righteousness, <sup>17</sup> so that the servant of God may be thoroughly equipped for every good work” (2 Tim 3:16-17)

# Structure of the Church

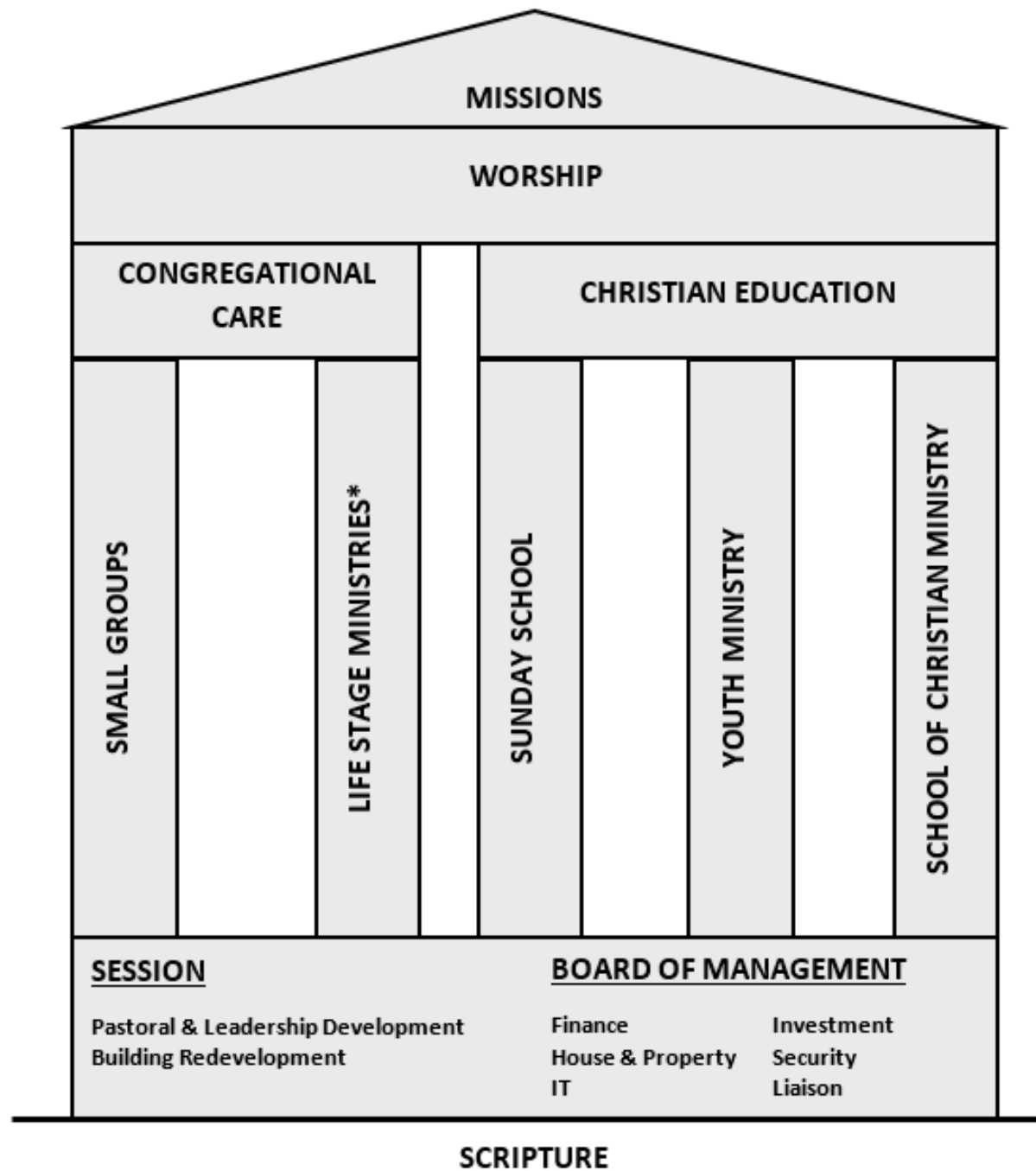
- The structure of the church provides not only the strength but also dictates the direction of its ministry
- Structural components:
  - Church government—plurality of godly elders (1 Tim 3:1)
  - Order—ministry with plans, goals, and objectives (1 Cor 14:40)

# Functions of the Church

- Worship—every thing done to the glory of God (1 Cor 10:31)
- Strikes a balance between edification and evangelism
- Equips people to exercise their spiritual gifts
- Is characterized by love—do members care for each other?

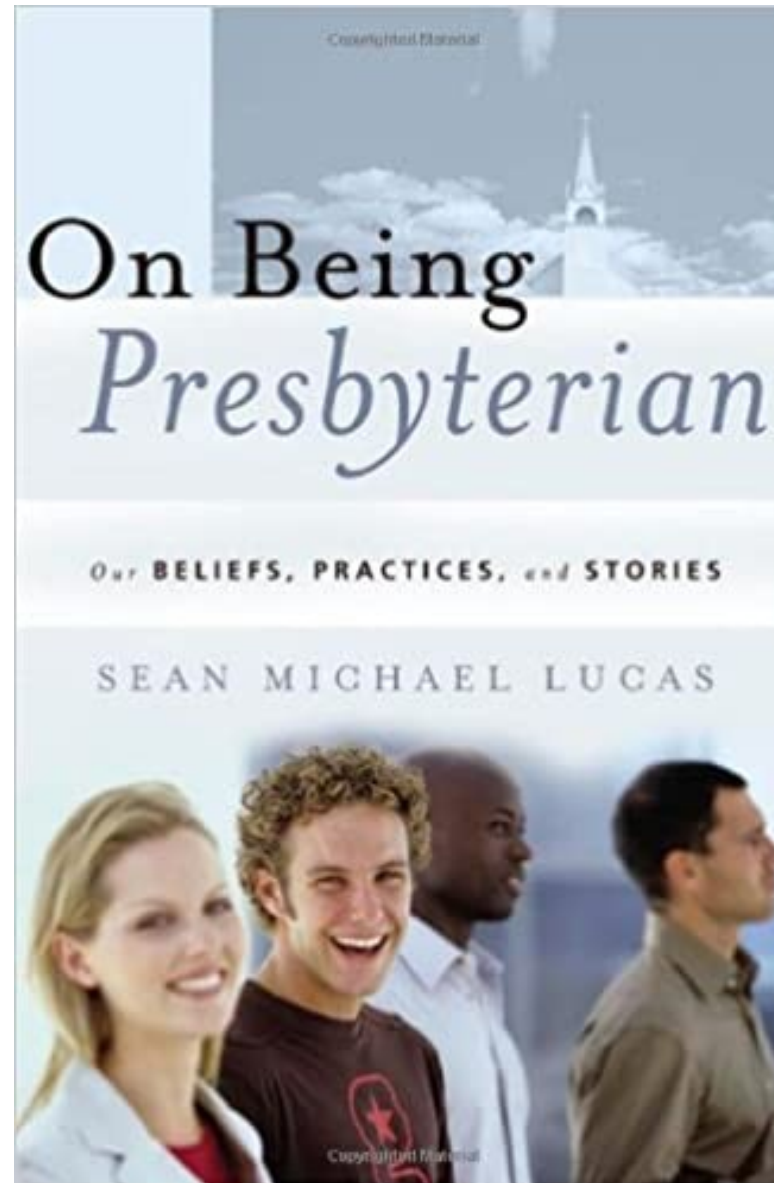
# The Environment (culture) of the Church

- Focus—To what extent do people desire to know God and to make him known?
- Direction—Does the church have a clear direction and every member is working together in a coordinated manner? (1 Cor 3:1-7)
- Sincerity of faith—Do people live by faith or a sense of trusting God?
- A spirit of sacrifice—To what extent do people give of their time, resources, and talents?
- Attitude toward leaders—How does the congregation view their pastors, elders, and other leaders?
- Unity in diversity—To what extent is the church spiritually unified?





# Who Are You?



# Who Are Presbyterians?

- What descriptors would you use to define your identity as a Presbyterian?
- What does it mean to be Reformed?
- Reformed Christianity is rooted in the 16<sup>th</sup> century, when Protestant reformers protested against the corrupt teachings and practices of the Roman Catholic church
- The Reformed tradition identifies with the life and work of John Calvin and the three basic doctrines of the Reformation—Scripture only, grace only, and faith only

# Who Are Presbyterian?

- Reformed doctrinal beliefs are summarised in the 17<sup>th</sup> century Westminster Confession of Faith and Catechisms
- Presbyterianism is a subset of the Reformed tradition and whose identity is shaped by our history, beliefs, and practices
- The term “Presbyterian” refers to a Greek term in the NT, *presbuteros*, meaning “elder”
- The Presbyterian Church governing body is based on a system of elders, teaching and ruling elders or ministers, who are ordained and responsible for the discipline, nurture and mission of the congregation

# Who Are Presbyterians?

- Presbyterianism is a subset of the Reformed tradition and whose identity is shaped by our history, beliefs, and practices
- The term “Presbyterian” refers to a Greek term in the NT, *presbuteros*, meaning “elder”
- The Presbyterian Church governing body is based on a system of elders, ruling and teaching elders or ministers, who are ordained and responsible for the discipline, nurture and mission of the congregation
- The evangelical church today needs to clarify its identity

# Presbyterian Beliefs and Practices

- At the heart of Reformed Theology is belief in God's sovereignty and human dependence
- We believe the Scriptures teach that God is in complete and absolute control of his creation
- "To put it simply, when we talk about God as sovereign, we mean that God is King" (Lucas 2006, 15)
- Therefore, we depend on him for all we have and are

# Presbyterian Beliefs and Practices

- The **Priority of God's grace**: This refers to God's unmerited favor given to us as a gift from beginning to end
- **Covenant theology**: This refers to an administration or a story of redemption
- **Sacraments of Baptism and the Supper of the Lord** are considered as Signs and Seals of God's grace
- **Presbyterian Church Government**—all things done decently and in order

# Long-term DMC Vision

- Provide a strong **word-based** ministry through the pulpit and DGs to disciple Christlike believers who apply God's word
- Focus on developing the **next generation** of believers into mature servant leaders through a clear growth path
- Nurture a **caring community** through DGs, zones, and visitations
- Create space where **intergenerational** relationships and spiritual conversations can flourish
- Develop a **master-plan** for local evangelism, outreach, and overseas mission
- Include the **Indonesian congregation** as a ministry of ORPC

# Running the Church During A&A

- **Focus:** Equip future leaders
- Stabilise worship and logistics in Suntec
- Retain and care for members through DG, zonal system, mentoring and visitation
- Reach out to non-DG members/worshippers, inviting them to our DGs, DfD groups, and zonal events
- Train and raise more leaders to prepare for our return, especially our youth and young adults
- Streamline our discipleship pathway



# The Church When We Return

- **Focus:** Outreach
- Start more DGs and new DfD discipleship groups after and before AM and PM services
- Involve the majority of worshippers in DGs with strong sense of zonal community across the generations
- Mobilise DGs to be more inviting toward non-believers through zonal and church-wide evangelistic events on Easter and Xmas
- Launch second AM service and move PM service to 5pm
- Prepare plans for engaging the surrounding communities